

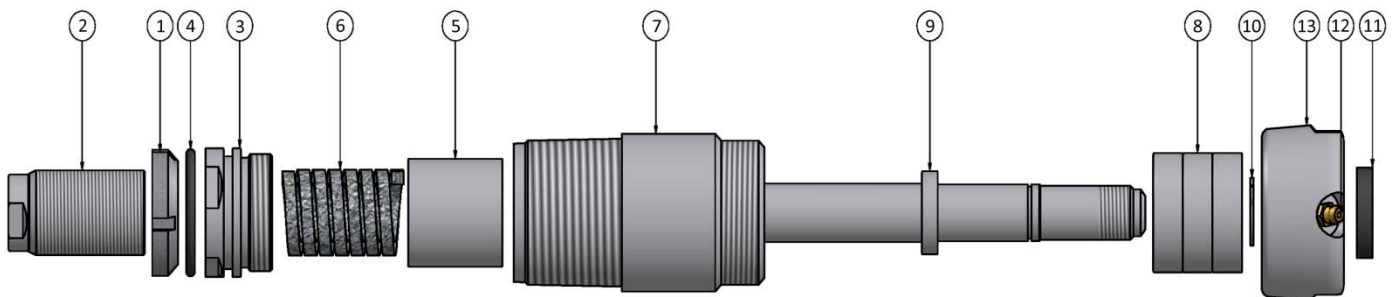
## Underground High Speed Water Swivel

### Service Instructions

The water swivel is fitted with a rope packing sleeve assembly to ensure long service, effective sealing, and ease of adjustment. The stem assembly is cartridge style, and installs as one assembly. Use of three (3) bearings ensures robust stabilization to further deter bearing failure caused by hose whip.

Replacement of stem, bearings, seal, and adjustment of packing:

1. Remove the cap (13), left-handed threads; once the cap is removed, the cap seal (11) may be extracted using a screw driver; a new seal may be installed by using the seal installation tool.
2. Remove the lock nut (1) from the adjuster (2); remove the adjuster (2) from the packing nut (3); remove stem cartridge assembly (8, 9, 10).
3. Remove packing nut (3) from the swivel body (7), remove used packing (6) from packing sleeve (5) using needle nose pliers. Insert stem cartridge (8, 9, 10), insert new packing string (6) counter-clockwise using a punch to compact the packing tightly ensuring that the full 20"\* of packing is inserted in packing sleeve. DO NOT mar the surface of the stem (9) or seal failure may occur resulting in leakage.
4. Insert the packing nut (3) to swivel body (7), turning clock-wise, tighten. Insert adjuster (2) to the packing nut (3), turning clock-wise until snug. Insert lock nut (1) to adjuster (2) until tight, locking adjuster in place.
5. Packing may be adjusted by loosening the lock nut (1) and tightening the adjuster by turning clock-wise, thereby compacting the packing (6) against the stem (9), followed by re-tightening the lock nut to reset the unit for use.



\* Length of packing varies by swivel size